

---

# RoHS Test Report

---

Report No. : AGC10514210503-001

**SAMPLE NAME** : Rockbox Bold Xs  
**MODEL NAME** : 1RB5100SBDDv1 001  
**APPLICANT** : Sitecom Europe B.V.  
**STANDARD(S)** : Please refer to follow page(s).  
**DATE OF ISSUE** : Jun.03, 2021

**Attestation of Global Compliance (Shenzhen) Std & Tech Co., Ltd.**



Any report having not been signed by authorized approver, or having been altered without authorization, or having not been stamped by the "Dedicated Testing/Inspection Stamp" is deemed to be invalid. Copying or excerpting portion of, or altering the content of the report is not permitted without the written authorization of AGC. The test results presented in the report apply only to the tested sample. Any objections to report issued by AGC should be submitted to AGC within 15days after the issuance of the test report. Further enquiry of validity or verification of the test report should be addressed to AGC by agc@agc-cert.com.

Attestation of Global Compliance(Shenzhen)Co., Ltd  
Attestation of Global Compliance(Shenzhen)Std & Tech Co., Ltd  
Tel: +86-755 2523 4088 E-mail: agc@agc-cert.com Web: <http://cn.agc-cert.com/>



Applicant : Sitecom Europe B.V.  
Address : Blaak 6 / 3011 TA Rotterdam / The Netherlands  
Test Site : 6/F., Building 2, Sanwei Chaxi Industrial Park, Sanwei Community,  
Hangcheng Street, Bao'an District, Shenzhen, Guangdong, China

**Report on the submitted sample(s) said to be:**

Sample Name : Rockbox Bold Xs  
Model : 1RB5100SBDDv1 001  
Buyer : Sitecom Europe B.V.  
Brand : FRESH 'N REBEL  
Country of Origin : China  
Country of Destination : Netherlands  
Manufacturer :

Address :

Sample Received Date : May 24, 2021  
Testing Period : May 24, 2021 to Jun.01, 2021

**Test Requested:**

- As specified by client, to determine the Pb, Cd, Hg, Cr<sup>6+</sup>, PBBs, PBDEs, DBP, BBP, DEHP, DIBP content in the submitted sample in accordance with Directive 2011/65/EU (RoHS) and its amendment directive (EU) 2015/863 on XRF and Chemical Method.
- As specified by client, to determine Lead(Pb), Cadmium(Cd), Mercury(Hg) content in the submitted sample in accordance with European Directive 2006/66/EC and its amendments 2013/56/EU on batteries and accumulators.

**Conclusion****Pass****Pass**Approved by: 

Liangdan, Jessie.Liang

Technical Director

Any report having not been signed by authorized approver, or having been altered without authorization, or having not been stamped by the "Dedicated Testing/Inspection Stamp" is deemed to be invalid. Copying or excerpting portion of, or altering the content of the report is not permitted without the written authorization of AGC. The test results presented in the report apply only to the tested sample. Any objections to report issued by AGC should be submitted to AGC within 15 days after the issuance of the test report. Further enquiry of validity or verification of the test report should be addressed to AGC by agc@agc-cert.com.

Attestation of Global Compliance(Shenzhen)Co., Ltd  
Attestation of Global Compliance(Shenzhen)Std & Tech Co., Ltd  
Tel: +86-755 2523 4088 E-mail: agc@agc-cert.com Web: http://cn.agc-cert.com/



No.	Sample Description		
Rockbox Bold Xs Model 1RB5100SDBBV1 001			
1.	Outer shell	Blue mesh cloth	
2.		Black plastic shell	
3.		Black plastic inner shell	
4.		Black rubber button	
5.		Blue coating	
6.		Blue plastic case	
7.		Blue rubber foot pad with silk screen	
8.		Milky white rubber button	
9.		Blue rubber button	
10.		Blue rubber plug	
11.		Blue soft rubber handle	
12.	Black screw		
13.	Microphone	Black glue cap	
14.		Metal shell	
15.		PCB board	
16.		Tin solder	
17.		Black wire jacket	
18.		Red wire jacket	
19.		White plastic terminal	
20.	Bass cover	Black rubber vibrating film	
21.		Metal sheet	
22.	Horn	Black foam	
23.		Magnetic shielding cover	
24.		Metal frame	
25.		Tin solder	
26.		Red wire jacket	
27.		Black wire jacket	
28.		Black rubber vibrating film	
29.	Connecting plate	Key	Black plastic button
30.			Metal shell
31.			Grey plastic seat
32.		Micropositioner	White plastic micropositioner
33.			Contact pin
34.		Terminal block	White plastic seat
35.			Grey plastic buckle
36.	PCB board		
37.	Tin solder		
38.	Circuit board	Black plastic audio connector	
39.		IC body	
40.		Tin plating	
41.		Aluminum	Aluminum shell
42.		capacitor	Black plastic seat
43.		Red plastic micropositioner	
44.		Micro connector	Micro metal joint
45.			Grey plastic joint
46.		Key	Black plastic button

Any report having not been signed by authorized approver, or having been altered without authorization, or having not been stamped by the "Dedicated Testing/Inspection Stamp" is deemed to be invalid. Copying or excerpting portion of, or altering the content of the report is not permitted without the written authorization of AGC. The test results presented in the report apply only to the tested sample. Any objections to report issued by AGC should be submitted to AGC within 15 days after the issuance of the test report. Further enquiry of validity or verification of the test report should be addressed to AGC by agc@agc-cert.com.



THIS DOCUMENT WAS REDACTED WITH THE PRODUCTIP REDACTION TOOL ON 2022-11-30. AT THE TIME OF GENERATING THE DOCUMENT THE ORIGINAL DOCUMENT WAS AVAILABLE ONLY BE MADE AVAILABLE BY THE DOCUMENT OWNER.

47.			Metal shell
48.			Black plastic seat
49.			White plastic micropositioner
50.			Black magnetic frame inductance
51.			Chip diode
52.			Gray inductance
53.			Black foam
54.			Hot melt adhesive
55.		FFC holder	White plastic seat
56.			Grey plastic buckle
57.		PCB board	
58.		Tin solder	
59.	Battery		Blue sleeving
60.			Silver label
61.			Electric core
62.			IC body
63.			Tin plating
64.			PCB board
65.			Tin solder
66.			Red wire jacket
67.			Black wire jacket
68.			

**Test Result:**

(Test Method/ Instrument/ MDL and Limit: See Appendix)

**1. Test Result of RoHS**

No.	Test result (mg/kg)										Conclusion
	Pb	Cd	Hg	Cr <sup>6+</sup>	PBBs	PBDEs	DIBP	DBP	BBP	DEHP	
1	N.D.	N.D.	N.D.	N.D.	N.D.	N.D.	N.D.*	N.D.*	N.D.*	N.D.*	Conformity
2	N.D.	N.D.	N.D.	N.D.	N.D.*	N.D.*	N.D.*	N.D.*	N.D.*	N.D.*	Conformity
3	N.D.	N.D.	N.D.	N.D.	N.D.	N.D.	N.D.*	N.D.*	N.D.*	N.D.*	Conformity
4	N.D.	N.D.	N.D.	N.D.	N.D.	N.D.	N.D.*	N.D.*	N.D.*	N.D.*	Conformity
5	N.D.	N.D.	N.D.	N.D.	N.D.	N.D.	N.D.*	N.D.*	N.D.*	N.D.*	Conformity
6	N.D.	N.D.	N.D.	N.D.	N.D.	N.D.	N.D.*	N.D.*	N.D.*	N.D.*	Conformity
7	N.D.	N.D.	N.D.	N.D.	N.D.	N.D.	N.D.*	N.D.*	N.D.*	N.D.*	Conformity
8	N.D.	N.D.	N.D.	N.D.	N.D.	N.D.	N.D.*	N.D.*	N.D.*	N.D.*	Conformity
9	N.D.	N.D.	N.D.	N.D.	N.D.	N.D.	N.D.*	N.D.*	N.D.*	N.D.*	Conformity
10	N.D.	N.D.	N.D.	N.D.	N.D.	N.D.	N.D.*	N.D.*	N.D.*	N.D.*	Conformity
11	N.D.	N.D.	N.D.	N.D.	N.D.	N.D.	N.D.*	N.D.*	N.D.*	N.D.*	Conformity
12	N.D.	N.D.	N.D.	389	N/A	N/A	N/A	N/A	N/A	N/A	Conformity
13	N.D.	N.D.	N.D.	N.D.	N.D.	N.D.	N.D.*	N.D.*	N.D.*	N.D.*	Conformity
14	N.D.	N.D.	N.D.	N.D.	N/A	N/A	N/A	N/A	N/A	N/A	Conformity
15	N.D.	N.D.	N.D.	N.D.	N.D.*	N.D.*	N.D.*	N.D.*	N.D.*	N.D.*	Conformity
16	238	N.D.	N.D.	N.D.	N/A	N/A	N/A	N/A	N/A	N/A	Conformity
17	N.D.	N.D.	N.D.	N.D.	N.D.	N.D.	N.D.*	N.D.*	N.D.*	N.D.*	Conformity
18	N.D.	N.D.	N.D.	N.D.	N.D.	N.D.	N.D.*	N.D.*	N.D.*	N.D.*	Conformity
19	N.D.	N.D.	N.D.	N.D.	N.D.	N.D.	N.D.*	N.D.*	N.D.*	N.D.*	Conformity
20	N.D.	N.D.	N.D.	N.D.	N.D.	N.D.	N.D.*	N.D.*	N.D.*	N.D.*	Conformity

Any report having not been signed by authorized approver, or having been altered without authorization, or having not been stamped by the "Dedicated Testing/Inspection Stamp" is deemed to be invalid. Copying or excerpting portion of, or altering the content of the report is not permitted without the written authorization of AGC. The test results presented in the report apply only to the tested sample. Any objections to report issued by AGC should be submitted to AGC within 15 days after the issuance of the test report. Further enquiry of validity or verification of the test report should be addressed to AGC by agc@agc-cert.com.

Attestation of Global Compliance(Shenzhen)Co., Ltd

Attestation of Global Compliance(Shenzhen)Std &amp; Tech Co., Ltd

Tel: +86-755 2523 4088 E-mail: agc@agc-cert.com Web: http://cn.agc-cert.com/



No.	Test result (mg/kg)										Conclusion
	Pb	Cd	Hg	Cr <sup>6+</sup>	PBBs	PBDEs	DIBP	DBP	BBP	DEHP	
21	N.D.	N.D.	N.D.	334	N/A	N/A	N/A	N/A	N/A	N/A	Conformity
22	N.D.	N.D.	N.D.	N.D.	N.D.	N.D.	N.D.*	N.D.*	N.D.*	N.D.*	Conformity
23	N.D.	N.D.	N.D.	457	N/A	N/A	N/A	N/A	N/A	N/A	Conformity
24	N.D.	N.D.	N.D.	N.D.	N/A	N/A	N/A	N/A	N/A	N/A	Conformity
25	N.D.	N.D.	N.D.	N.D.	N/A	N/A	N/A	N/A	N/A	N/A	Conformity
26	N.D.	N.D.	N.D.	N.D.	N.D.	N.D.	N.D.*	N.D.*	N.D.*	N.D.*	Conformity
27	N.D.	N.D.	N.D.	N.D.*	N.D.	N.D.	N.D.*	N.D.*	N.D.*	N.D.*	Conformity
28	N.D.	N.D.	N.D.	N.D.	N.D.	N.D.	N.D.*	N.D.*	N.D.*	N.D.*	Conformity
29	N.D.	N.D.	N.D.	N.D.	N.D.	N.D.	N.D.*	N.D.*	N.D.*	N.D.*	Conformity
30	N.D.	N.D.	N.D.	313	N/A	N/A	N/A	N/A	N/A	N/A	Conformity
31	N.D.	N.D.	N.D.	N.D.	N.D.	N.D.	N.D.*	N.D.*	N.D.*	N.D.*	Conformity
32	N.D.	N.D.	N.D.	N.D.	217	217	N.D.*	N.D.*	N.D.*	N.D.*	Conformity
33	N.D.	N.D.	N.D.	N.D.	N/A	N/A	N/A	N/A	N/A	N/A	Conformity
34	N.D.	N.D.	N.D.	N.D.	N.D.	N.D.	N.D.*	N.D.*	N.D.*	N.D.*	Conformity
35	N.D.	N.D.	N.D.	N.D.	N.D.	N.D.	N.D.*	N.D.*	N.D.*	N.D.*	Conformity
36	N.D.	N.D.	N.D.	N.D.	N.D.*	N.D.*	N.D.*	N.D.*	N.D.*	N.D.*	Conformity
37	N.D.	N.D.	N.D.	N.D.	N/A	N/A	N/A	N/A	N/A	N/A	Conformity
38	N.D.	N.D.	N.D.	N.D.	N.D.	N.D.	N.D.*	N.D.*	N.D.*	N.D.*	Conformity
39	N.D.	N.D.	N.D.	N.D.	N.D.	N.D.	N.D.*	N.D.*	N.D.*	N.D.*	Conformity
40	N.D.	N.D.	N.D.	N.D.	N/A	N/A	N/A	N/A	N/A	N/A	Conformity
41	N.D.	N.D.	N.D.	N.D.	N/A	N/A	N/A	N/A	N/A	N/A	Conformity
42	N.D.	N.D.	N.D.	N.D.	N.D.	N.D.	N.D.*	N.D.*	N.D.*	N.D.*	Conformity
43	N.D.	N.D.	N.D.	N.D.	N.D.	N.D.	N.D.*	N.D.*	N.D.*	N.D.*	Conformity
44	N.D.	N.D.	N.D.	N.D.*	N/A	N/A	N/A	N/A	N/A	N/A	Conformity
45	N.D.	N.D.	N.D.	N.D.	N.D.	N.D.	N.D.*	N.D.*	N.D.*	N.D.*	Conformity
46	N.D.	N.D.	N.D.	N.D.	N.D.	N.D.	N.D.*	N.D.*	N.D.*	N.D.*	Conformity
47	N.D.	N.D.	N.D.	336	N/A	N/A	N/A	N/A	N/A	N/A	Conformity
48	N.D.	N.D.	N.D.	N.D.	N.D.	N.D.	N.D.*	N.D.*	N.D.*	N.D.*	Conformity
49	N.D.	N.D.	N.D.	N.D.	N.D.	N.D.	N.D.*	N.D.*	N.D.*	N.D.*	Conformity
50	N.D.	N.D.	N.D.	N.D.	N.D.	N.D.	N.D.*	N.D.*	N.D.*	N.D.*	Conformity
51	N.D.	N.D.	N.D.	N.D.	N.D.	N.D.	N.D.*	N.D.*	N.D.*	N.D.*	Conformity
52	N.D.	N.D.	N.D.	N.D.	N.D.	N.D.	N.D.*	N.D.*	N.D.*	N.D.*	Conformity
53	N.D.	N.D.	N.D.	N.D.	N.D.	N.D.	N.D.*	N.D.*	N.D.*	N.D.*	Conformity
54	N.D.	N.D.	N.D.	N.D.	N.D.	N.D.	N.D.*	N.D.*	N.D.*	N.D.*	Conformity
55	N.D.	N.D.	N.D.	N.D.	N.D.	N.D.	N.D.*	N.D.*	N.D.*	N.D.*	Conformity
56	N.D.	N.D.	N.D.	N.D.	N.D.	N.D.	N.D.*	N.D.*	N.D.*	N.D.*	Conformity
57	N.D.	N.D.	N.D.	N.D.	N.D.*	N.D.*	N.D.*	N.D.*	N.D.*	N.D.*	Conformity
58	N.D.	N.D.	N.D.	N.D.	N/A	N/A	N/A	N/A	N/A	N/A	Conformity
59	N.D.	N.D.	N.D.	N.D.	N.D.	N.D.	N.D.*	N.D.*	N.D.*	N.D.*	Conformity
60	N.D.	N.D.	N.D.	N.D.	N.D.	N.D.	N.D.*	N.D.*	N.D.*	N.D.*	Conformity
62	N.D.	N.D.	N.D.	N.D.	N.D.	N.D.	N.D.*	N.D.*	N.D.*	N.D.*	Conformity
63	N.D.	N.D.	N.D.	N.D.	N/A	N/A	N/A	N/A	N/A	N/A	Conformity
64	N.D.	N.D.	N.D.	N.D.	N.D.*	N.D.*	N.D.*	N.D.*	N.D.*	N.D.*	Conformity
65	212	N.D.	N.D.	N.D.	N/A	N/A	N/A	N/A	N/A	N/A	Conformity
66	N.D.	N.D.	N.D.	N.D.	N.D.	N.D.	N.D.*	N.D.*	N.D.*	N.D.*	Conformity
67	N.D.	N.D.	N.D.	N.D.	N.D.	N.D.	N.D.*	N.D.*	N.D.*	N.D.*	Conformity
68	N.D.	N.D.	N.D.	N.D.	N.D.	N.D.	N.D.*	N.D.*	N.D.*	N.D.*	Conformity

Any report having not been signed by authorized approver, or having been altered without authorization, or having not been stamped by the "Dedicated Testing/Inspection Stamp" is deemed to be invalid. Copying or excerpting portion of, or altering the content of the report is not permitted without the written authorization of AGC. The test results presented in the report apply only to the tested sample. Any objections to report issued by AGC should be submitted to AGC within 15 days after the issuance of the test report. Further enquiry of validity or verification of the test report should be addressed to AGC by agc@agc-cert.com.

Attestation of Global Compliance(Shenzhen)Co., Ltd  
 Attestation of Global Compliance(Shenzhen)Std & Tech Co., Ltd  
 Tel: +86-755 2523 4088 E-mail: agc@agc-cert.com Web: http://cn.agc-cert.com/



THIS DOCUMENT WAS REDACTED WITH THE PRODUCTIP REDACTION TOOL ON 2022-11-30. AT THE TIME OF GENERATING THE DOCUMENT THE ORIGINAL DOCUMENT WAS AVAILABLE ONLY BE MADE AVAILABLE BY THE DOCUMENT OWNER.

**Note:**

mg/kg = milligram per kilogram

 $\mu\text{g}/\text{cm}^2$  = microgram per square centimeter

MDL = Method Detection Limit

N.D.=Not Detected (less than method detection limit)

N/A= Not applicable

**Remark:**

- \*denotes as reported result(s) was (were) performed by wet chemistry method. Others were screened by XRF. For XRF screening, the result(s) of Cr VI was (were) reported as total chromium and the result(s) of PBBs and PBDEs was (were) reported as total bromine. Also, the XRF result(s) may be different to the actual content based on various factors including, but not limit to, sample size, thickness, area, nonuniformity composition, surface flatness.
- This XRF Scanning report is for reference purposes only. The applicant shall make its/his/her own judgment as to whether the information provided in this XRF screening report is sufficient for its/his/her purposes.

The result shown in this XRF scanning report will differ based on various factors, including but not limited to, the sample size, thickness, area, surface flatness, equipment parameters and matrix effect (e.g. plastic, rubber, metal, glass, ceramic etc.). Further wet chemical pre-treatment with relevant chemical equipment analysis are required to obtain quantitative data.

- Boiling-water-extraction:

Number	Colorimetric result (Cr(VI) concentration)	Qualitative result
1	The sample solution is < the 0,10 $\mu\text{g}/\text{cm}^2$ equivalent comparison standard solution	The sample is negative for Cr(VI) – The Cr(VI) concentration is below the limit of quantification. The coating is considered a non-Cr(VI) based coating.
2	The sample solution is $\geq$ the 0,10 $\mu\text{g}/\text{cm}^2$ and $\leq$ the 0,13 $\mu\text{g}/\text{cm}^2$ equivalent comparison standard solutions	The result is considered to be inconclusive – Unavoidable coating variations may influence the determination.
3	The sample solution is > the 0,13 $\mu\text{g}/\text{cm}^2$ equivalent comparison standard solution	The sample is positive for Cr(VI) – The Cr(VI) concentration is above the limit of quantification and the statistical margin of error. The sample coating is considered to contain Cr(VI).

- Negative indicates the absence of Cr(VI) on the tested areas concentration is below the limit of quantification.  
The coating is considered a non-Cr(VI) based coating.  
Uncertainty indicates the absence of Cr(VI) on the tested areas unavoidable coating variations may influence the determination.  
Positive indicates the presence of Cr(VI) on the tested areas concentration is above the limit of quantification and the statistical margin of error. The sample coating is considered to contain Cr(VI).  
Storage conditions and production date of the tested sample are unavailable and thus result of Cr(VI) represent status of the sample at the time of testing.

**2. Test Result of Lead(Pb), Cadmium(Cd), Mercury(Hg)(European Directive 2006/66/EC)**

No.	Test result (%)			Conclusion
	Lead(Pb)	Cadmium(Cd)	Mercury(Hg)	
61	N.D.	N.D.	N.D.	Conformity

Any report having not been signed by authorized approver, or having been altered without authorization, or having not been stamped by the "Dedicated Testing/Inspection Stamp" is deemed to be invalid. Copying or excerpting portion of, or altering the content of the report is not permitted without the written authorization of AGC. The test results presented in the report apply only to the tested sample. Any objections to report issued by AGC should be submitted to AGC within 15 days after the issuance of the test report. Further enquiry of validity or verification of the test report should be addressed to AGC by agc@agc-cert.com.

Attestation of Global Compliance(Shenzhen)Co., Ltd

Attestation of Global Compliance(Shenzhen)Std &amp; Tech Co., Ltd

Tel: +86-755 2523 4088 E-mail: agc@agc-cert.com Web: http://cn.agc-cert.com/



**Note:**

%= percentage

N.D.=Not Detected (less than method detection limit)

MDL = Method Detection Limit

**Appendix:**

Test Item	Test Method/ Instrument	MDL	Maximum Limit
<b>X-ray Fluorescence Spectrometry(XRF)</b>			
Lead (Pb)	IEC 62321-3-1:2013 / XRF	200mg/kg	1000mg/kg
Cadmium (Cd)		50mg/kg	100mg/kg
Mercury (Hg)		200mg/kg	1000mg/kg
Total Chromium		200mg/kg	/
Total Bromine		200mg/kg	/
<b>Wet Chemistry Method</b>			
Lead (Pb)	IEC 62321-5:2013/ ICP-OES	10mg/kg	1000mg/kg
Cadmium (Cd)	IEC 62321-5:2013/ ICP-OES	10mg/kg	100mg/kg
Mercury (Hg)	IEC 62321-4: 2013+A1:2017/ ICP-OES	10mg/kg	1000mg/kg
Non-metal Hexavalent Chromium (Cr <sup>6+</sup> )	IEC 62321-7-2:2017/ UV-Vis	8mg/kg	1000mg/kg
Metal Hexavalent Chromium (Cr <sup>6+</sup> )	IEC 62321-7-1:2015/ UV-Vis	0.1µg/cm <sup>2</sup>	/
Polybrominated Biphenyls (PBBs) -Monobromobiphenyl (MonoBB) -Dibromobiphenyl (DiBB) -Tribromobiphenyl (TriBB) -Tetrabromobiphenyl (TetraBB) -Pentabromobiphenyl (PentaBB) -Hexabromobiphenyl (HexaBB) -Heptabromobiphenyl (HeptaBB) -Octabromobiphenyl (OctaBB) -Nonabromodiphenyl (NonaBB) -Decabromodiphenyl (DecaBB)	IEC 62321-6:2015/ GC-MS	Single 5mg/kg	Sum 1000mg/kg
Polybrominated Diphenylethers (PBDEs) -Monobromodiphenyl ether (MonoBDE) -Dibromodiphenyl ether (DiBDE) -Tribromodiphenyl ether (TriBDE) -Tetrabromodiphenyl ether (TetraBDE) -Pentabromodiphenyl ether (PentaBDE) -Hexabromodiphenyl ether (HexaBDE) -Heptabromodiphenyl ether (HeptaBDE) -Octabromodiphenyl ether (OctaBDE) -Nonabromodiphenyl ether (NonaBDE) -Decabromodiphenyl ether (DecaBDE)	IEC 62321-6:2015/ GC-MS	Single 5mg/kg	Sum 1000mg/kg
Di-iso-butyl phthalate (DIBP)	IEC 62321-8:2017/ GC-MS	50mg/kg	1000mg/kg
Dibutyl phthalate (DBP)		50mg/kg	1000mg/kg
Butylbenzyl phthalate (BBP)		50mg/kg	1000mg/kg
Di-(2-ethylhexyl) Phthalate (DEHP)		50mg/kg	1000mg/kg

Any report having not been signed by authorized approver, or having been altered without authorization, or having not been stamped by the "Dedicated Testing/Inspection Stamp" is deemed to be invalid. Copying or excerpting portion of, or altering the content of the report is not permitted without the written authorization of AGC. The test results presented in the report apply only to the tested sample. Any objections to report issued by AGC should be submitted to AGC within 15 days after the issuance of the test report. Further enquiry of validity or verification of the test report should be addressed to AGC by agc@agc-cert.com.

Attestation of Global Compliance(Shenzhen)Co., Ltd

Attestation of Global Compliance(Shenzhen)Std &amp; Tech Co., Ltd

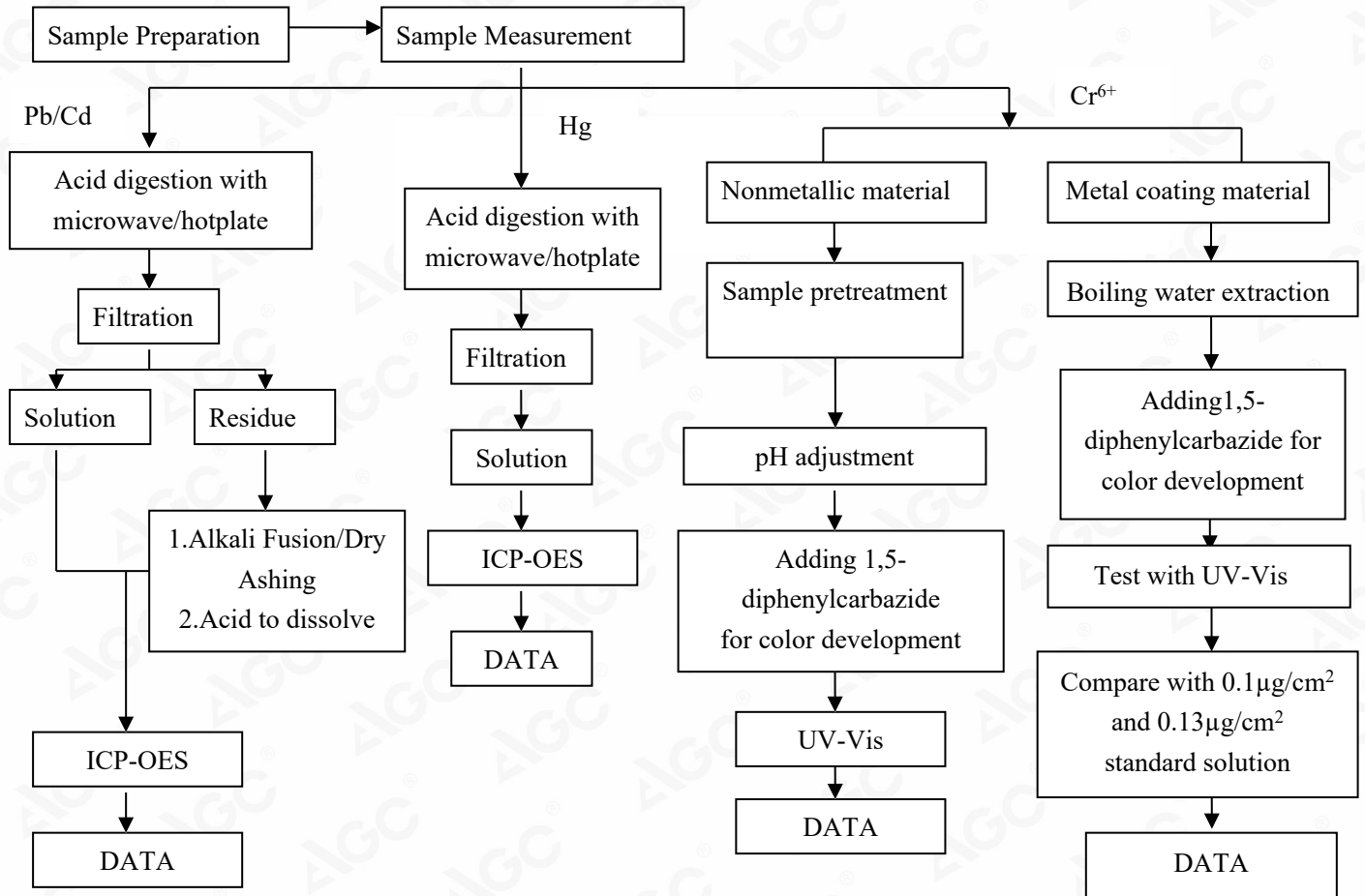
Tel: +86-755 2523 4088 E-mail: agc@agc-cert.com Web: http://cn.agc-cert.com/



Test Item	Test Method/ Instrument	MDL	Maximum Limit
<b>Lead(Pb), Cadmium(Cd), Mercury(Hg)(European Directive 2006/66/EC)</b>			
Lead (Pb)	IEC 62321-5:2013/ ICP-OES	0.0005%	/
Cadmium (Cd)	IEC 62321-5:2013/ ICP-OES	0.0005%	0.002%
Mercury (Hg)	IEC 62321-4: 2013+A1:2017/ ICP-OES	0.0001%	0.0005%

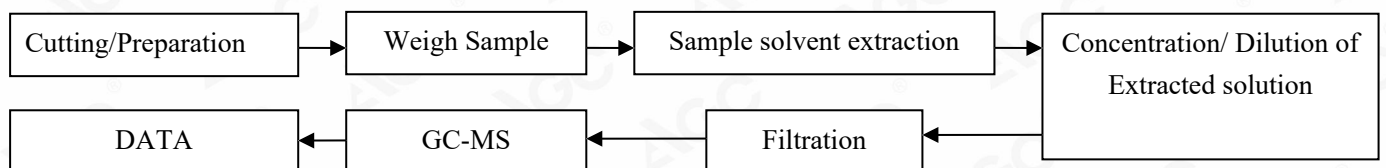
### Test Flow Chart

#### 1. For Pb, Cd, Hg, Cr<sup>6+</sup>



These sample were dissolved totally by pre-conditioning method according to above flow chart (Cr<sup>6+</sup> test method excluded)

#### 2. For PBBs, PBDEs, DBP, BBP, DEHP, DIBP



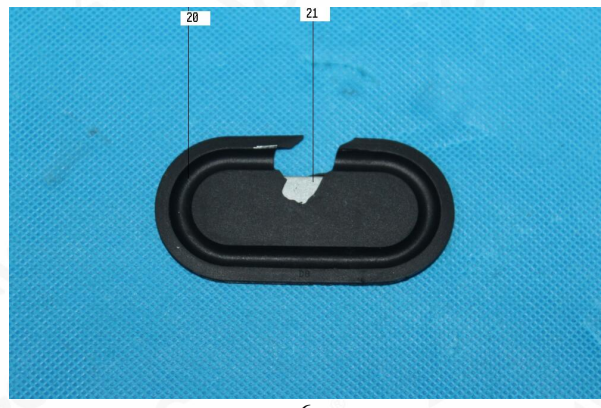
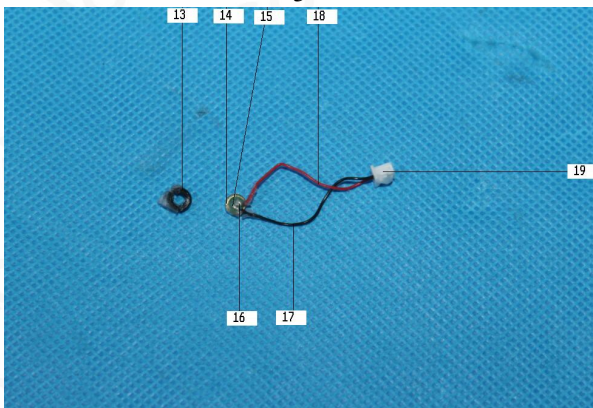
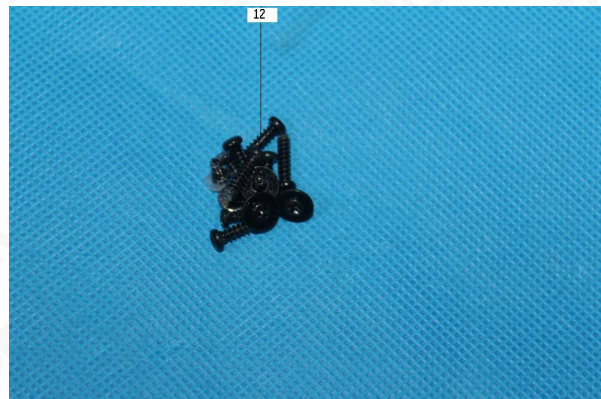
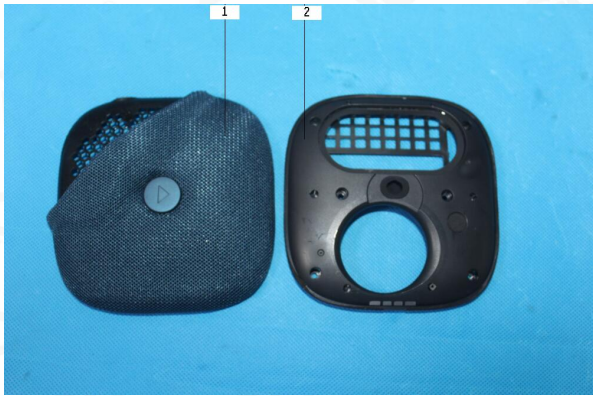
Any report having not been signed by authorized approver, or having been altered without authorization, or having not been stamped by the "Dedicated Testing/Inspection Stamp" is deemed to be invalid. Copying or excerpting portion of, or altering the content of the report is not permitted without the written authorization of AGC. The test results presented in the report apply only to the tested sample. Any objections to report issued by AGC should be submitted to AGC within 15 days after the issuance of the test report. Further enquiry of validity or verification of the test report should be addressed to AGC by agc@agc-cert.com.



THIS DOCUMENT WAS REDACTED WITH THE PRODUCTIP REDACTION TOOL ON 2022-11-30. AT THE TIME OF GENERATING THE ORIGINAL DOCUMENT WAS AVAILABLE ONLY BE MADE AVAILABLE BY THE DOCUMENT OWNER.



**The photo of the sample**

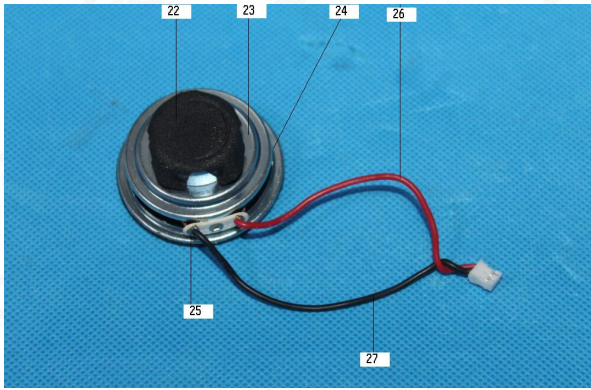


Any report having not been signed by authorized approver, or having been altered without authorization, or having not been stamped by the "Dedicated Testing/Inspection Stamp" is deemed to be invalid. Copying or excerpting portion of, or altering the content of the report is not permitted without the written authorization of AGC. The test results presented in the report apply only to the tested sample. Any objections to report issued by AGC should be submitted to AGC within 15 days after the issuance of the test report. Further enquiry of validity or verification of the test report should be addressed to AGC by agc@agc-cert.com.

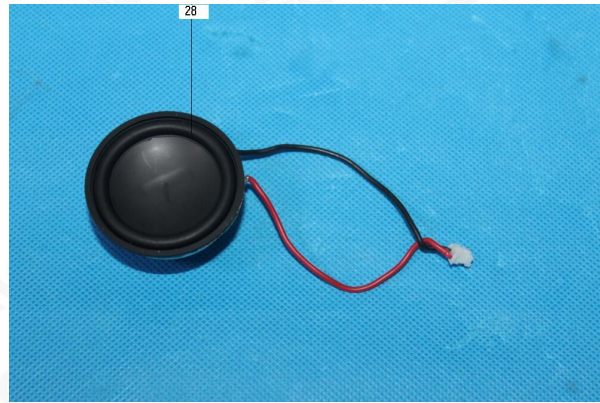
Attestation of Global Compliance(Shenzhen)Co., Ltd  
Attestation of Global Compliance(Shenzhen)Std & Tech Co., Ltd  
Tel: +86-755 2523 4088 E-mail: agc@agc-cert.com Web: http://cn.agc-cert.com/



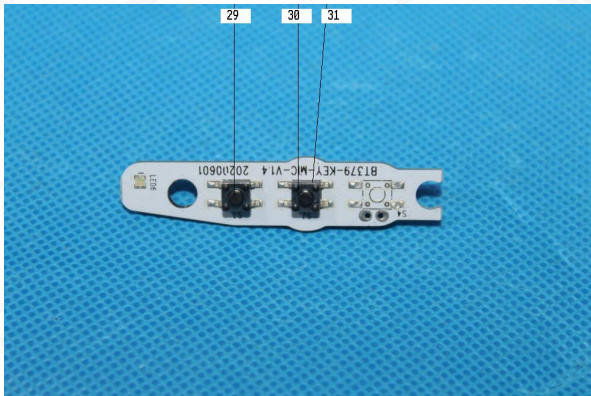
THIS DOCUMENT WAS REDACTED WITH THE PRODUCTIP REDACTION TOOL ON 2022-11-30. AT THE TIME OF GENERATING THE DOCUMENT THE ORIGINAL DOCUMENT WAS AVAILABLE ALSO. THE ORIGINAL CAN ONLY BE MADE AVAILABLE BY THE DOCUMENT OWNER.



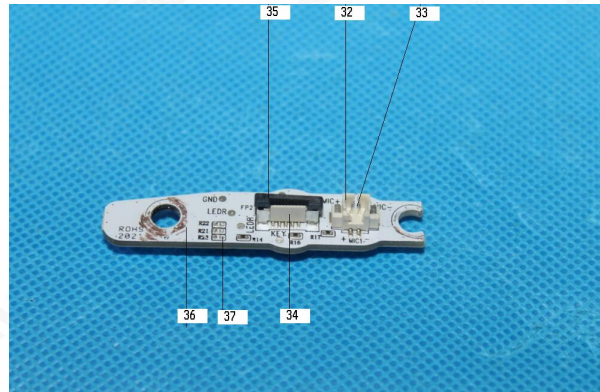
7



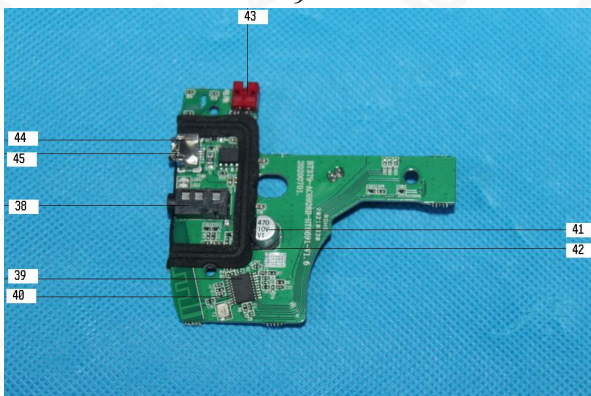
8



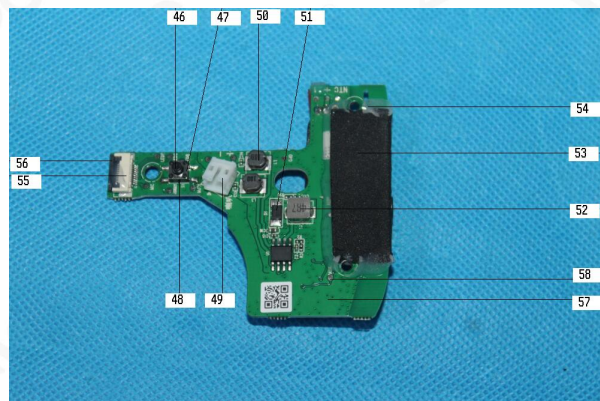
9



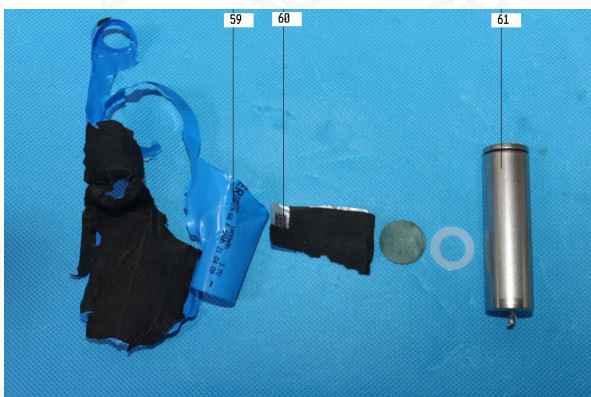
10



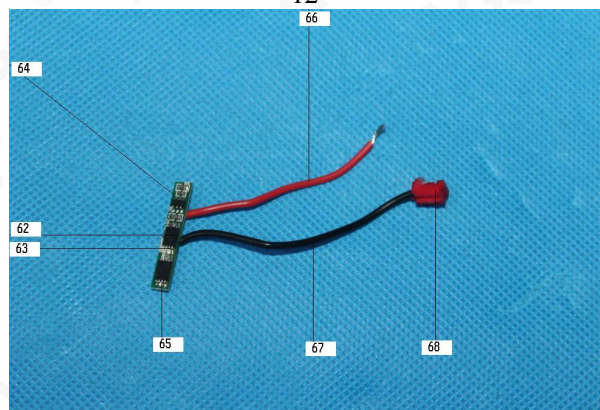
11



12



13



14

Any report having not been signed by authorized approver, or having been altered without authorization, or having not been stamped by the "Dedicated Testing/Inspection Stamp" is deemed to be invalid. Copying or excerpting portion of, or altering the content of the report is not permitted without the written authorization of AGC. The test results presented in the report apply only to the tested sample. Any objections to report issued by AGC should be submitted to AGC within 15 days after the issuance of the test report. Further enquiry of validity or verification of the test report should be addressed to AGC by agc@agc-cert.com.

Attestation of Global Compliance(Shenzhen)Co., Ltd  
Attestation of Global Compliance(Shenzhen)Std & Tech Co., Ltd  
Tel: +86-755 2523 4088 E-mail: agc@agc-cert.com Web: http://cn.agc-cert.com/



THIS DOCUMENT WAS REDACTED WITH THE PRODUCTIP REDACTION TOOL ON 2022-11-30. AT THE TIME OF GENERATING THE DOCUMENT THE ORIGINAL DOCUMENT WAS AVAILABLE ALSO. THE ORIGINAL CAN ONLY BE MADE AVAILABLE BY THE DOCUMENT OWNER.



### AGC10514210503-001

AGC authenticates the photo only on the original report

\*\*\* End of Report \*\*\*

Any report having not been signed by an authorized approver, or having been altered without authorization, or having not been stamped by the "Dedicated Testing/Inspection Stamp" is deemed to be invalid. Copying or excerpting portion of, or altering the content of the report is not permitted without the written authorization of AGC. The test results presented in the report apply only to the tested sample. Any objections to a report issued by AGC should be submitted to AGC within 15 days after the issuance of the test report. Further enquiry of validity or verification of the test report should be addressed to AGC by [agc@agc-cert.com](mailto:agc@agc-cert.com).

Attestation of Global Compliance(Shenzhen)Co., Ltd  
Attestation of Global Compliance(Shenzhen)Std & Tech Co., Ltd  
Tel: +86-755 2523 4088 E-mail: [agc@agc-cert.com](mailto:agc@agc-cert.com) Web: <http://cn.agc-cert.com/>





## Conditions of Issuance of Test Reports

1. All samples and goods are accepted by the Attestation of Global Compliance (Shenzhen) Std & Tech Co., Ltd. (the "Company") solely for testing and reporting in accordance with the following terms and conditions. The company provides its services on the basis that such terms and conditions constitute express agreement between the company and any person, firm or company requesting its services (the "Clients").
2. Any report issued by Company as a result of this application for testing services (the "Report") shall be issued in confidence to the Clients and the Report will be strictly treated as such by the Company. It may not be reproduced either in its entirety or in part and it may not be used for advertising or other unauthorized purposes without the written consent of the Company. The Clients to whom the Report is issued may, however, show or send it, or a certified copy thereof prepared by the Company to its customer, supplier or other persons directly concerned. The Company will not, without the consent of the Clients, enter into any discussion or correspondence with any third party concerning the contents of the Report, unless required by the relevant governmental authorities, laws or court orders.
3. The Company shall not be called or be liable to be called to give evidence or testimony on the Report in a court of law without its prior written consent, unless required by the relevant governmental authorities, laws or court orders.
4. The non-CMA report issued by AGC is only permitted to be used by the client as internal reference use and shall not be used for public demonstration purpose.
5. In the event of the improper use of the report as determined by the Company, the Company reserves the right to withdraw it, and to adopt any other additional remedies which may be appropriate.
6. Samples submitted for testing are accepted on the understanding that the Report issued cannot form the basis of, or be the instrument for, any legal action against the Company.
7. The Company will not be liable for or accept responsibility for any loss or damage however arising from the use of information contained in any of its Reports or in any communication whatsoever about its said tests or investigations.
8. Clients wishing to use the Report in court proceedings or arbitration shall inform the Company to that effect prior to submitting the sample for testing.
9. The Company is not responsible for recalling the electronic version of the original report when any revision is made to them. The Client assumes the responsibility to providing the revised version to any interested party who uses them.
10. Subject to the variable length of retention time for test data and report stored hereinto as otherwise specifically required by individual accreditation authorities, the Company will only keep the supporting test data and information of the test report for a period of six years. The data and information will be disposed of after the aforementioned retention period has elapsed. Under no circumstances shall we provide any data and information which has been disposed of after retention period. Under no circumstances shall we be liable for damage of any kind, including (but not limited to) compensatory damages, lost profits, lost data, or any form of special, incidental, indirect, consequential or punitive damages of any kind, whether based on breach of contract of warranty, tort (including negligence), product liability or otherwise, even if we are informed in advance of the possibility of such damages.

Any report having not been signed by authorized approver, or having been altered without authorization, or having not been stamped by the "Dedicated Testing/Inspection Stamp" is deemed to be invalid. Copying or excerpting portion of, or altering the content of the report is not permitted without the written authorization of AGC. The test results presented in the report apply only to the tested sample. Any objections to report issued by AGC should be submitted to AGC within 15 days after the issuance of the test report. Further enquiry of validity or verification of the test report should be addressed to AGC by [agc@agc-cert.com](mailto:agc@agc-cert.com).

Attestation of Global Compliance(Shenzhen)Co., Ltd  
Attestation of Global Compliance(Shenzhen)Std & Tech Co., Ltd  
Tel: +86-755 2523 4088 E-mail: [agc@agc-cert.com](mailto:agc@agc-cert.com) Web: <http://cn.agc-cert.com/>

